

Ubuntu + bluetooth + k600i

In several month after I've finished Training of Trainers (TOT), I got request from Education Center for teaching in the 126th DTPS. My subject is "Application Program:MS windows and MS Office". When I was getting turn to practice teaching, I used wireless bluetooth presenter that it was a facility on my k600i. Certainly, a bluetooth device was included on my notebook.

I've tried it on windows and running well, according K600i manual book that this device has been supported by microsoft. Because of I was a curious man, I interested to try it on my ubuntu. After googling, I found it but I didn't understand the language, so I just guessed it. Finally I could run it. This is my ways :

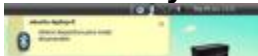
1. Install your bluetooth :

`$sudo apt-get install gnome-bluetooth bluez-utils bluez-gnome bluetooth`

If it has installed, you can check it in *System*→*Preferences*→*Bluetooth Preferences* and please try to change the default setting.



2. Detect your bluetooth



Make sure that your bluetooth has installed goodly, you can see in icon and then you can run :

`$lsusb`

On mine show this :

Bus 005 Device 001: ID 0000:0000

Bus 003 Device 001: ID 0000:0000

Bus 002 Device 002: ID 04f3:0210 Elan Microelectronics Corp.

Bus 002 Device 001: ID 0000:0000

Bus 001 Device 003: ID 0a12:0001 Cambridge Silicon Radio, Ltd Bluetooth Dongle

(HCI mode)
Bus 001 Device 001: ID 0000:0000
Bus 004 Device 001: ID 0000:0000

It was informations from my bluetooth device.

After that, please run :

```
$ hciconfig
```

The result :

hci0: Type: USB

BD Address: 00:02:5B:00:D2:83 ACL MTU: 384:8 SCO MTU: 64:8

UP RUNNING PSCAN

RX bytes:5062 acl:140 sco:0 events:91 errors:0

TX bytes:1121 acl:32 sco:0 commands:37 errors:0

and activate it with command :

```
$hciconfig hci0 up
```

3. Turn on bluetooth on your Cellphone

4. Try to scanning device with command

```
$hcitool scan
```

Scanning ...

00:16:B8:A1:01:C2 CHOLIZZE

It means your ubuntu has found bluetooth device "CHOLIZZE" with mac address "00:16:B8:A1:01:C2"

5. Configure your Notebook

Edit /etc/bluetooth/rfcomm.conf with command:

```
$ sudo gedit /etc/bluetooth/rfcomm.conf
```

Replace "bind no" with "bind yes", then you can add mac address "device

00:16:B8:A1:01:C2"

Edit /etc/bluetooth/hcid.conf with comand :

```
$sudo gedit /etc/bluetooth/hcid.conf
```

Replace "security user" with "security auto", and you must remember the passkey to authentication later "passkey 1234;", you can change it or let's make it with default passkey.

6. Restart bluetooth with command :

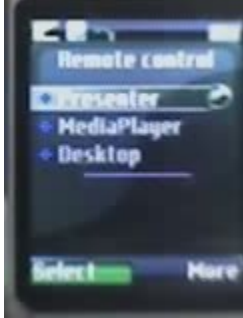
```
$ sudo gedit /etc/init.d/bluetooth restart
```

7. Connect your bluetooth on Cellphone with bluetooth on your ubuntu:

```
$sudo hidd -connect 00:16:B8:A1:01:C2
```

After connecting, your cellphone will request passkey :

8. After you've run successfully you can run *remote control* application on your cellphone:



Now, you can choose, *presenter* (for presenting), *media player* (for multimedia) or *desktop* (for mouse function).¹

¹ Cholis' Blog - <http://muantep.wordpress.com/2007/07/20/ubuntu-bluetooth-k600i/>